

A young boy is rowing a small wooden boat on a calm body of water. The boat is white with a dark stripe and has the word "LEAKY" written on its side. The boy is shirtless and is using a wooden oar. The background features a dense forest of tall trees and a field of reeds or tall grasses. The lighting is soft, suggesting a late afternoon or early morning setting.

ADVENTURE & RELAXATION  
FARLEIGH WALLOP & BEYOND

FARLEIGH WALLOP

HAMPSHIRE ENGLAND



Discover a whole world of activity within the historic walls of Farleigh House, its magical grounds and charming countryside beyond. The Farleigh Wallop team enjoys taking your requests to help your stay feel more like home. If there is something missing from this list of activities, please get in contact with the team and we can discuss your requirements.

Please contact [stay@farleighwallop.com](mailto:stay@farleighwallop.com)

## CONTENTS

### I

#### Within the Farleigh Wallop Estate

SPORTING PURSUITS - 05

A COUNTRY LIFESTYLE - 10

ENTERTAINMENT & CELEBRATION - 14

WELLBEING & RELAXATION - 16

GASTRONOMY - 19

### II

#### Beyond the Farleigh Wallop Estate

FAMILY EXCURSIONS - 25

SOMETHING FOR THE ADULTS - 28

SPECTATOR ENTERTAINMENT - 30

ENGLISH HERITAGE & NATIONAL TRUST SITES - 32

MAP - 34





WITHIN  
THE FARLEIGH  
WALLOP  
ESTATE

## SPORTING PURSUITS

Exploring the Farleigh Wallop Estate is, in itself, an adventure. From woodland trails to serpentine walkways, there are acres of countryside to enjoy. Without the need to leave the privacy of the Estate, you can enjoy all manner of pulse-raising activities from tennis, badminton and mountain biking, to swimming, paddle boarding and zorbing.



## ON LAND

### CROQUET\*

While away an afternoon on beautifully manicured lawns with a quintessentially British game of croquet. The full traditional set is laid out for you to enjoy at your leisure. We can also book professional coaching sessions with our Hampshire expert.

### BADMINTON

Choose your perfect spot on the grounds and we'll set up the net and provide all the kit you need for a quietly competitive game of badminton.

### TENNIS\*

Exercise some healthy competition on our private hard courts, with racquets and balls provided. Or if you are looking to sharpen your skills, we can arrange an LTA-approved coaching session, for all ages and levels.

### CRICKET

Running alongside the winding gravel driveway, enjoy a proper game of cricket on your very own pitch, which doubles as our helipad.

\*ALL EXPERIENCES ARE TAILORED TO YOUR REQUIREMENTS WITH COSTS VARYING ACCORDINGLY.



## CYCLING

Forget thoughts of the outside world, spending the day cycling the endless trails – through woodland, around meadows and down country lanes in the Farleigh Wallop Estate and Hampshire countryside beyond. With two adult electric mountain bikes, four adult and three children's mountains bikes, there is plenty to keep the family entertained. Helmets are provided.

## CROSS COUNTRY RUNNING

Run through the beautiful countryside and scenic paths that make the 4,000-acre estate. For the ultimate off-the-beaten track experience, we recommend you bring your own trail running shoes.

## FISHING\*

With fishing rods and bait provided, catch and release carp on our own boating lake or explore the 40-mile River Test, home to some of the most famous trout fishing in the world. We can also arrange fly fishing lessons from local experts, priced per session.

\*ALL EXPERIENCES ARE TAILORED TO YOUR REQUIREMENTS WITH COSTS VARYING ACCORDINGLY.





## ON WATER

### SWIMMING

The outdoor pool is available all year round - in the summer it's a delight, in the winter we can heat it upon request. Adults and children's swimming coaches can be arranged for those looking to improve their skills.\* Sheltered by a courtyard of heavenly scented wisteria and roses, the pool is also the perfect private setting for al fresco dining, BBQs and drinks.

### PADDLE BOARDING

Combine the natural beauty of our boating lake with a chance to strengthen and tone. From a morning paddle to a sunset session, two stand-up paddle boards and accessories are available for use at all times.

### ROWING

Set off from the jetty on 'Leaky', our traditional rowing boat, for laps around the lake or for a shorter hop onto the island (picnics available, weather permitting.)

### ZORBING\*

Experience a complete adrenaline boost, rolling at speed through the grounds or on the pool or lake. Whatever your age, you can't help but feel a smile spread across your face in this fast-paced activity.

\*ALL EXPERIENCES ARE TAILORED TO YOUR REQUIREMENTS WITH COSTS VARYING ACCORDINGLY.





## A COUNTRY LIFESTYLE

Arriving at Farleigh Wallop, you step into a country lifestyle. Make the most of the great outdoors, riding horseback, following deer in their natural habitat and landing a falcon for the first time.

All these activities can be arranged by our team with a little notice. Prices can be discussed, with itineraries adapted to your own requirements.

## HORSE RIDING\*

Whether you would like to trot gently, soak up the beauty of the natural world or practice jumps at our local riding schools, we can provide tuition or guides to suit. Equipment hire will be included in the price of the session.

## GAME SHOOTING\*

The Farleigh Shoot is known for its stunning location, expertise and warm hospitality. Whether you are an experienced gun, or a first time shot, our Head Keeper and his team will ensure you have a day to remember. We can store your own cartridges and guns in our specialist gun room, or we can supply upon request.

## FALCONRY\*

Learn about birds of prey and fly and land your own bird on the grounds of Farleigh Wallop, with local falconers, whose charisma and energy will create a memorable experience.

\*ALL EXPERIENCES ARE TAILORED TO YOUR REQUIREMENTS WITH COSTS VARYING ACCORDINGLY.





## ARCHERY\*

Professional archers help you to achieve that feeling of satisfaction when the arrow hits the target. For children and adults alike, our partners will set everything up so you can pick up your bow at a time that suits you.

## CLAY PIGEON AND LASER SHOOTING\*

For those with quick reactions, and a competitive streak, clay pigeon shooting is a must and is as challenging as game shooting itself. Practice your aim with both traditional clay and laser options on the grounds.

## DEER STALKING\*

Tune into your senses, taking in the scents, sounds and movements of the Estate, with expert guides who will teach you how to follow the deer in their natural habitat, so you can get an insight into their movements and daily routine.

## PAINTBALLING\*

The vast and mysterious woods of Farleigh Wallop create the ideal setting for a competitive game of paintballing. Deep in the trees and completely silent, this is the ultimate test of teamwork.

\*ALL EXPERIENCES ARE TAILORED TO YOUR REQUIREMENTS WITH COSTS VARYING ACCORDINGLY.





## ENTERTAINMENT & CELEBRATION

Farleigh Wallop has seen many celebrations over the years and our expert team is on-hand to help you mark all occasions big and small. Our event experts and activities concierge can assist you in creating the perfect day, arranging all manner of entertainment, from fireworks to jazz musicians to circus performers.



### FIREWORKS\*

Mark special occasions with a sparkle in the sky – with personal firework displays that add to the drama and theatrical feel of Farleigh Wallop.

### JOUSTING\*

Take a step back in time learning with a team of professional horsemen, stuntmen and joustiers. Watch a heroic battle scene unfold before your eyes with medieval music or take part in a tailored jousting masterclass, suitable for all ages.

### LIVE MUSIC\*

Farleigh Wallop comes alive to the rhythm of music. Whether creating cocktail evenings with slow jazz, comforting carols by the fire, a black-tie Opera Gala or a soulful celebration – our portfolio of professional musicians can nurture and elevate every occasion.

### CIRCUS ACTS\*

Impress with new skills or watch in awe as magicians and circus acts delight with their jaw-dropping skills and lighthearted humour, which is sure to raise a smile for even the toughest of audiences. Depending on the nature of the experience, performances can be set up on the grounds or within Farleigh House.

### COUNTRY FETES\*

Enjoy the fun of a country fete all within the grounds of Farleigh Wallop. Curate your perfect celebration with balloon artists; face painting; bouncy castles; fairground rides; climbing towers; bungee trampoline; petting zoo; coconut shy; popcorn/cotton candy carts; ice cream vans and inflatable assault course.

\*ALL EXPERIENCES ARE TAILORED TO YOUR REQUIREMENTS WITH COSTS VARYING ACCORDINGLY.



Credit: HRH Amooti Nakabiri Binaisa, by Tim Motion





## WELLBEING & RELAXATION

From the moment you enter Farleigh Wallop, we will do all we can to help your shoulders drop so you can forget the stresses of everyday life. With the freedom and space to explore our colourful grounds, you can discover what peace means to you.





## THERAPIES\*

Let go of any tensions from the outside world, with our range of in-house therapies, including: Reflexology, Reiki, sports, full body, neck and shoulder, Indian head and hot stone massages.

## PERSONAL TRAINING\*

Our expert coaches use weight training techniques to condition and strengthen the body.

## YOGA\*

Hatha Flow Yoga 1:1s or group classes can take place in the beautiful surroundings of the House or Gardens.

## DANCE\*

For endorphin inducing sessions, we offer West Coast Swing, Salsa and Zumba.

## NAILS\*

Whether in preparation for an evening of celebration or simply maintenance, manicures and pedicures are available for ladies, gentlemen and children over 7 years old.

\*ALL EXPERIENCES ARE TAILORED TO YOUR REQUIREMENTS WITH COSTS VARYING ACCORDINGLY.

## A QUIET READ

Even if the house is alive with activity, you will always be able to find quiet enclaves in Farleigh House, including the library which is bursting with classics, the recipe books in the family kitchen, or generous pile of books found by your bedside.

## EXPLORING THE HAMLET OF FARLEIGH WALLOP

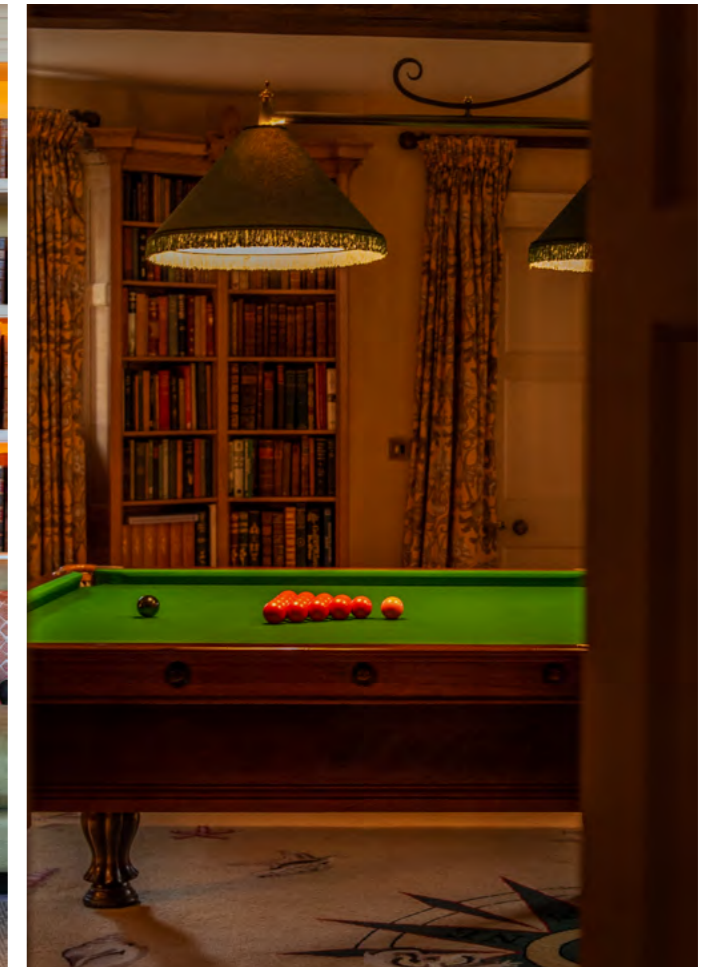
Follow meandering paths and escape to a quiet spot. Discover agent woodland, an historic church and witness working farmland. Float away with your thoughts, be mindful of your surroundings, take a moment to breathe in the nature that the surrounds you.

## GAMES ROOM

Bursting with delights to keep the whole family entertained, from Snooker, Pool and Billiards, to Monopoly, Cluedo and Chess.

## CINEMA ROOM

To switch off completely, retire to the cinema room where welcoming sofas and cosy evenings with the family await.





## GASTRONOMY

Hampshire is renowned for locally grown quality produce and inspiring dining that turns with the seasons. On warmer days, surrounded by rolling hills and wisteria, a picnic or al fresco dining is a must. Explore garden to plate dining first-hand, picking seasonal produce to enjoy with your meal.

FORAGING\*

Begin your day foraging with a local expert who will teach you how to hone your senses and uncover the secret treats of the forest.

CULINARY MASTERCLASSES\*

Bring your discoveries back to the kitchen and learn some essential culinary techniques and new flavour combinations from our highly esteemed in-residence chefs. Whether a beginner or self-proclaimed expert, our chefs will help you create dishes that are sure to impress family and friends.

WINE TASTING\*

Enjoy a private wine tasting without leaving the House from local winery Hattingley Valley Winery.

\*ALL EXPERIENCES ARE TAILORED TO YOUR REQUIREMENTS WITH COSTS VARYING ACCORDINGLY.





ARTS & CRAFTS

Let creativity take hold of you in a historic house filled with stories and surrounded by natural beauty.

### ART CLASSES\*

In this beautiful setting, you can't help but feel creative. Upon request, we can invite professional artists to guide students of all levels.

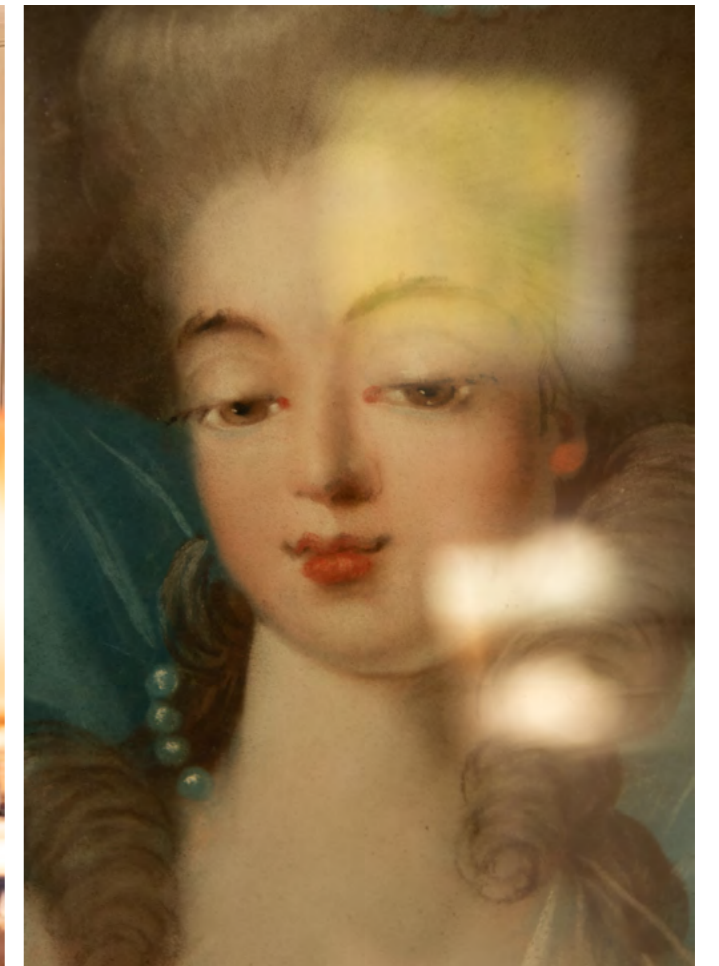
### FLORISTRY\*

Inspired by the cutting and landscaped gardens try your hand at the delicate art of floristry. Create your own floral masterpiece with the help of local experts.

### ART TOUR\*

The walls of Farleigh House are awash with historic portraits. Enjoy this private window into the past with an expert tour, exploring the secrets of the House.

**\*ALL EXPERIENCES ARE TAILORED TO YOUR REQUIREMENTS WITH COSTS VARYING ACCORDINGLY.**





BEYOND  
THE FARLEIGH  
WALLOP  
ESTATE



Farleigh Wallop is uniquely positioned deep in the Hampshire countryside yet within reach of London, the South Coast and a whole array of activities to keep you busy. Being here you have the option to stay contained within the Estate and feel a million miles away from normal life or explore the wonders that lie beyond.



## FAMILY EXCURSIONS

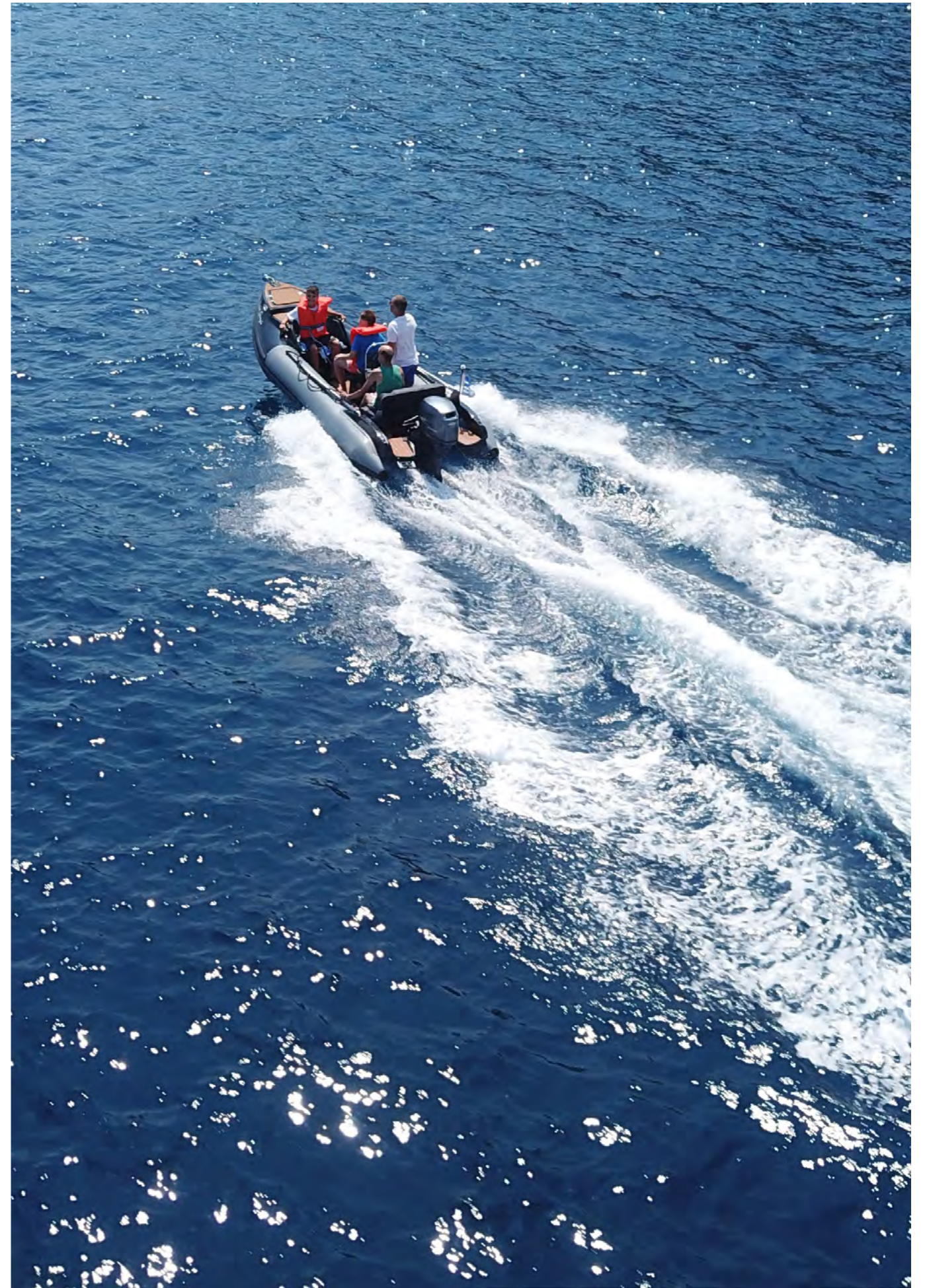
Historic market towns, medieval and maritime cities, country parks and forests, islands, ferries, zoos and activity centres - all possible within a day trip from Farleigh Wallop.

- Basingstoke is a market town dating back to the Domesday book, expanded in the 1960s and now comprises residential communities and a useful town centre with bars, restaurants, cinemas, theatres and leisure facilities including Milestones Museum (5 miles).
- Old Basing is the site of the siege of Basing House by Cromwell and the Parliamentarians during the English Civil War. The ruins and the Great Barn are open to visitors April – October (6 miles).
- Visit Alresford market town for quality local produce, welcoming pubs, boutique shopping and the nearby Watercress Line railway, with Thomas the Tank engine special events (11 miles).
- Odiham market town, home to RAF Odiham, Odiham Castle ruins, canal boat trips, pubs and restaurants and nearby Newlyns farm shop, cookery school, café and Caviste wine emporium (12 miles).
- Winchester, home to the Great Hall at The Castle, with a replica of King Arthur's legendary round table, historic Winchester College, Winchester Cathedral, Christmas market and ice rink, shopping, restaurants, Science Centre & Planetarium, Marwell Zoo and Jane Austen's House Museum (17 miles).
- Newbury, a historic market town, is home to the Racecourse and the real Downtown Abbey, Highclere Castle (18 miles).



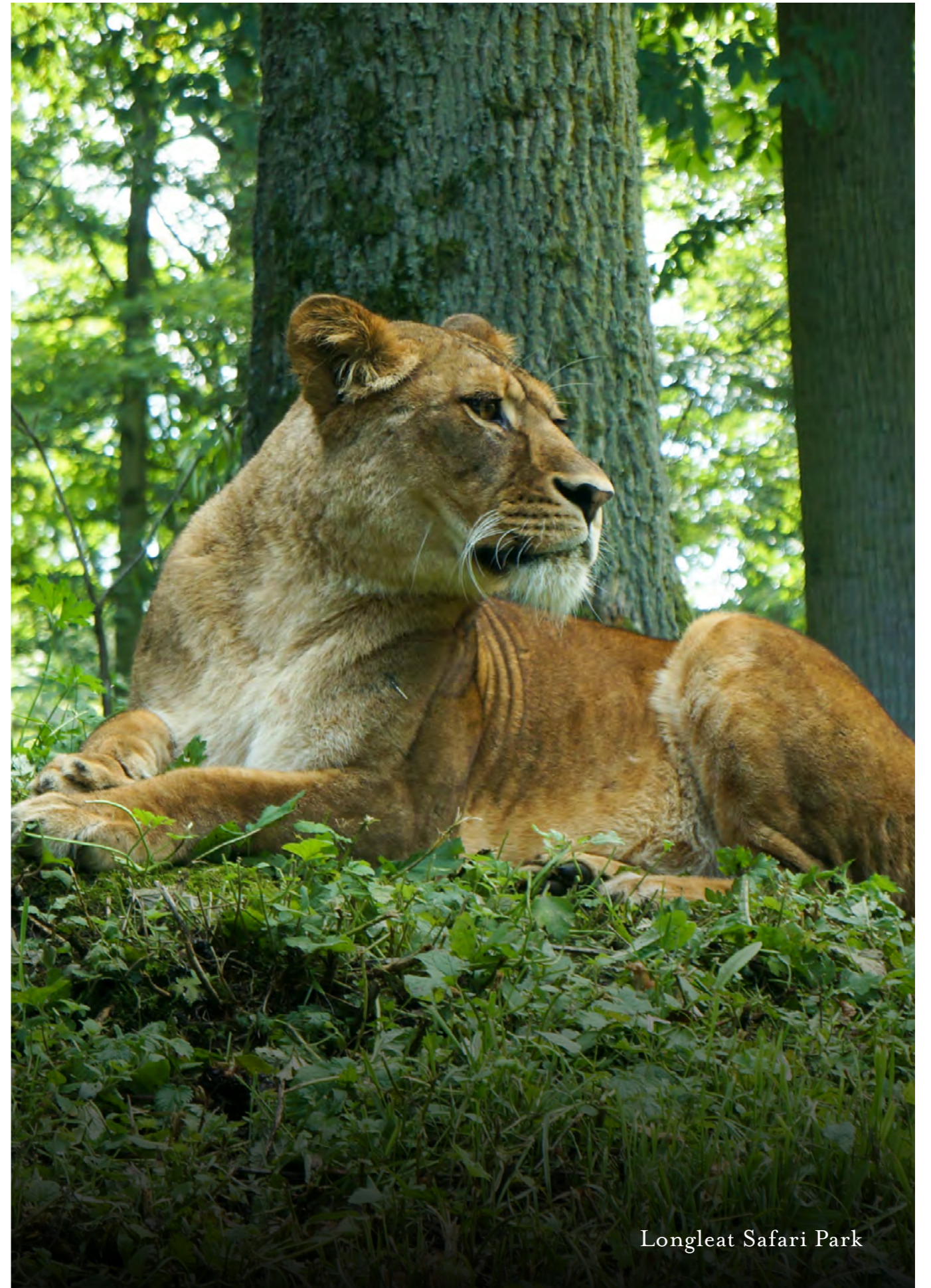
Highclere Castle

- Visit Southampton for the Boat Show, cruise ship departures, RIB hire, hovercraft and car ferries to the Isle of Wight, as well as Calshot Activities Centre (28 miles).
- Visit Isle of Wight (ferry via Southampton) for the Isle of Wight Festival, Cowes Week, Queen Victoria's holiday home 'Osborne', Garlic Farm, The Needles, Dinosaur Isle, Blackgang Chine, beautiful beaches and miles of walks for all abilities.
- Henley is famous for its annual Regatta, riverside location and smart, bustling streets (29 miles).
- New Forest for wild ponies and witchcraft, cycling, walking, camping and destination hospitality - such as The Pig and Limewood. Enjoy outdoor activities, such as kayaking and bush craft, as well as the local spots of Ashurst, Lymington, Brockenhurst and the National Motor Museum at Beaulieu (32+ miles).
- Windsor & Eton – home to Windsor Castle, Eton College, Legoland, shopping and riverside dining (35 miles).
- The historic monument of Stonehenge is a must-see (38 miles).
- Portsmouth, home to the Historic Dockyard where you can step aboard the HMS Victory, see the remains of the famous Mary Rose and go big brand outlet shopping at Gunwharf Quays (39 miles).
- Chichester, West Sussex, is a cathedral city and market town, bursting with Roman remains, the Chichester (theatre) Festival, the Pallant House Gallery and home to East and West Wittering beaches (45 miles).
- And not forgetting that London is just over an hour away. The lights of the West End, shops of Knightsbridge, catch ups on the Kings Road, or the sights and sounds of our great capital are a mere hop away.



## WITHIN EASY REACH

- Bowling (5 miles).
- Cinema (5 miles).
- Ice Skating (5 miles).
- Gliding at Lasham (6 miles).
- Wellington Country Park (14 miles).
- Winchester Science Centre and Planetarium (15 miles).
- Alice Holt Country Park (16 miles).
- Four Kingdoms Adventure Park and Family Farm (18 miles).
- River Test, for trout fishing and walks (18 miles).
- Finkley Down Farm (19 miles).
- Bird World (21 miles).
- Marwell Zoo (24 miles).
- Go Ape Southampton (27 miles).
- Queen Elizabeth Country Park (28 miles).
- Peppa Pig World (33 miles).
- Legoland (33 miles).
- Thorpe Park (37 miles).
- Blue Reef Aquarium Portsmouth (41 miles).
- Longleat safari park, house and grounds (56 miles).



Longleat Safari Park



## SOMETHING FOR THE ADULTS

Vineyards are abundant in this region, with sparkling wines making their way into Michelin star restaurants around the world. We are delighted to store wine from The Grange Estate (9 miles) in our cellar, with its Pink dry English sparkling wine delightful and sought after in the summer months. The Coates and Seely Winery (13 miles) in Whitchurch is a family-owned, discerning affair with wines to match. The world-famous Bombay Sapphire Distillery (11 miles) is juniper and cocktail heaven with tours and masterclasses available to book via the concierge.

A number of local and micro-breweries are nearby, including:

- Andwell Brewery (8 miles).
- Meon Valley Cider (18 miles).
- Itchen Valley Brewery (27 miles).
- Fallen Acorn Brewery (40 miles).



The Grange Vineyard

## SPECTATOR ENTERTAINMENT

Farleigh Wallop is perfectly positioned to enjoy some of the world's most prestigious events in the spectator calendar, including the festivities surrounding Ascot and Henley Regatta, which have a gravitational pull internationally.

- Farnborough Air Show (21 miles).
- Thruxton Race Circuit (26 miles).
- Ascot Racecourse, including Royal Ascot (29 miles).
- Cricket at the Ageas Bowl (32 miles).
- Henley Regatta (29 miles).
- Cowes, including Cowes Week (52 miles).
- Madejski Stadium, Reading (19 miles).
- St Mary's Stadium, Southampton (29 miles).
- Basingstoke Bisons Ice Hockey (5 miles).
- National Motor Museum, Beaulieu (40 miles).
- Goodwood Revival and horse racing (37 miles).





Goodwood Revival



## ENGLISH HERITAGE SITES

- The Grange at Northington, which hosts world class opera and ballet during The Grange Festival in June and July each year (9 miles).
- Silchester Roman City Walls and Amphitheatre (14 miles).
- Wolvesey Castle, Winchester (18 miles).
- Flowerdown Barrows (20 miles).
- Bishop's Waltham Palace (21 miles).
- Medieval Merchant's House, Southampton (30 miles).
- Netley Abbey, Southampton (35 miles).
- Tichfield Abbey (37 miles).
- Southwick Priory (37 miles).
- Portchester Castle (43 miles).
- Calshot Castle (44 miles).
- Fort Brockhurst (44 miles).
- King James's and Landport Gates, Portsmouth (47 miles).
- Royal Garrison Church, Portsmouth (48 miles).
- Fort Hurst (54 miles).



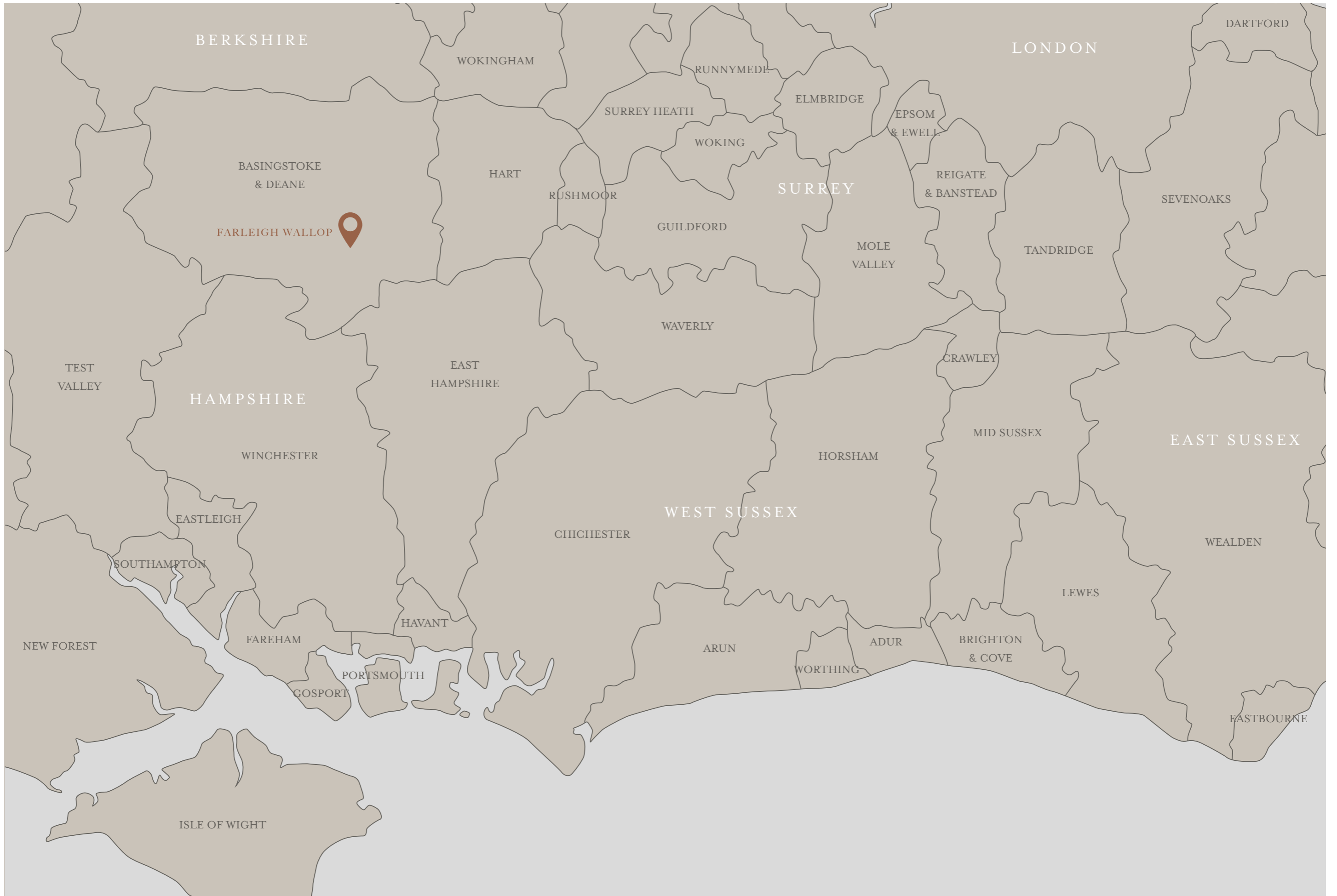
## NATIONAL TRUST SITES

- The Vyne (10 miles).
- Hinton Ampner (15 miles).
- Mottisfont (27 miles).





The Grange



Our House concierge can assist with  
arranging tickets, transfers, car hire,  
experience itineraries and bookings. Please  
do contact us should you need any assistance  
before or during your stay.

Please contact:  
[stay@farleighwallop.com](mailto:stay@farleighwallop.com)  
Tel: 01256 301 525

[www.farleighwallop.com](http://www.farleighwallop.com)

